



***Planting a
new vineyard
or orchard?***

Wilson Grow Tubes are the fastest, most economical way to go from planting to harvest.

Why grow tubes?

- First harvest comes sooner
- Higher plant survival, fewer replants
- Shelter from herbicides and cultivators for fast, effective weed control
- Protection from animal pests like deer and rabbits
- Smaller planting stock grows with less root damage and less transplant shock for superior long term health and yield



Why Wilson Grow Tubes?

Wilson is the largest provider of grow tubes in North America. Our twin-walled, side opening design has become the industry standard for ease of use, high performance and durability.

- Proven pink/beige color for optimal light transmission
- 3.5 inch diameter for superior biomass growth with balanced root/shoot ratio
- Large tabs for easy fastening to training stakes or trellis posts
- UV stabilized for multiple uses
- Available in 18, 20, 24, 30 and 36 inch heights

Wilson Grow Tubes Accelerate Establishment Of All Vine, Tree And Berry Crops

Don't spend money on paper guards that break down and do not accelerate growth.

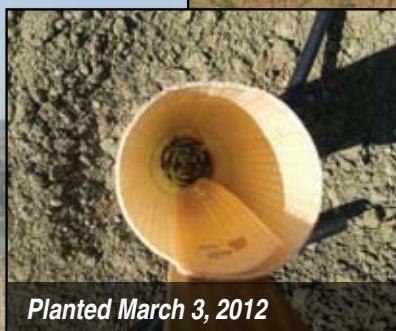
Wilson Grow Tubes give you:

- Lower cost per use
- Longer lasting spray protection
- Greenhouse environment for low stress and fast growth
- More complete animal protection
- Reduced vine/tree training costs

For Grapevines...



For Pistachios...



For Almonds, Pecans & Walnuts...



For pricing and more information call your local Wilson Orchard & Vineyard Supply expert:

Steve Kuhn
WA & Canada
(509) 728-1929
steve@wilsonirr.com

Bill Johnson
Wenatchee, WA
(509) 728-0664
bill@wilsonirr.com

Juan Pinon
WA & OR
(509) 728-1339
juan@wilsonirr.com

Matt Blevins
Tri-Cities, WA
(509) 728-0570
mattb@wilsonirr.com

Chris Siems
California
(507) 301-5106
chris@wilsonirr.com

www.wilsonirr.com